

Office Space For Lease

2304 N Cole Road, Boise ID

Individual Suites D* ♦ 144 ± sf



N * This floor plan representation is not to scale. Actual office space may differ.

www.commercialnw.com ~ nancy@commercialnw.com ~ 208.344.0288



THE INFORMATION CONTAINED HEREIN HAS BEEN OBTAINED BY RELIABLE SOURCES, BUT IS NOT GUARANTEED.
COMMERCIAL NORTHWEST TEAM-A KW COMMERCIAL AFFILIATE



Office Space For Lease

2308 N Cole Road, Boise ID

Suite G * ♦ 1,041 ± sf ♦ \$8.50/sf FSEJ

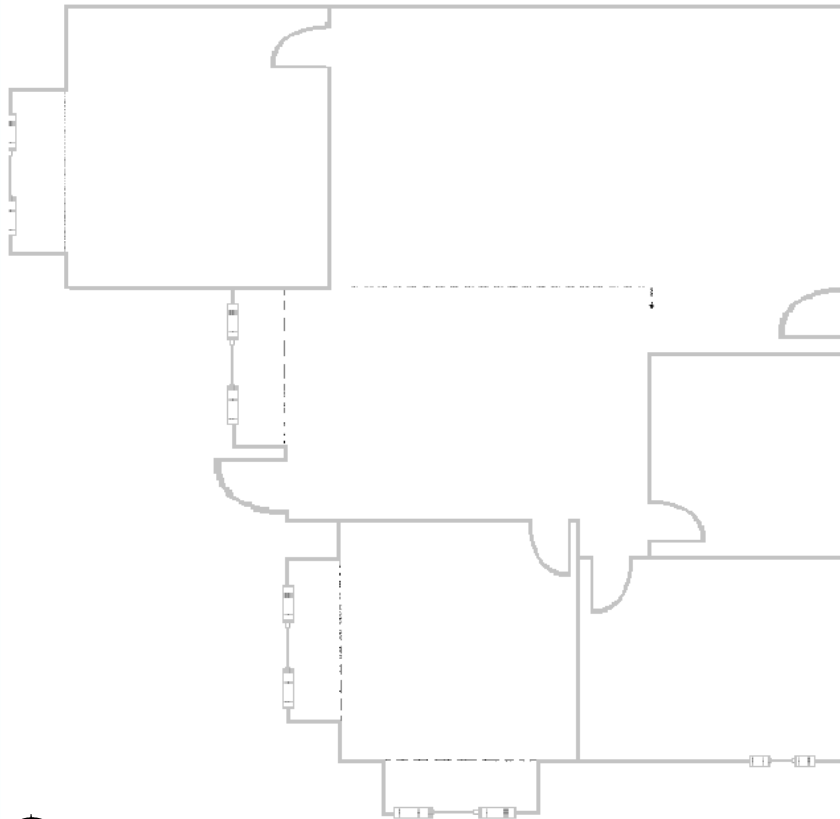
2308 N Cole

♦ Year Built: 1977 ♦ Zoned: R-1C

4 Private Offices, Conference Room, Reception, & additional room for cubicles



Suite G



* This floor plan representation is not to scale. Actual office space may differ.

www.commercialnw.com ~ nancy@commercialnw.com ~ 208.344.0288



THE INFORMATION CONTAINED HEREIN HAS BEEN OBTAINED BY RELIABLE SOURCES, BUT IS NOT GUARANTEED.
COMMERCIAL NORTHWEST TEAM-A KW COMMERCIAL AFFILIATE



Office Space For Lease

2312 N Cole Road, Boise ID

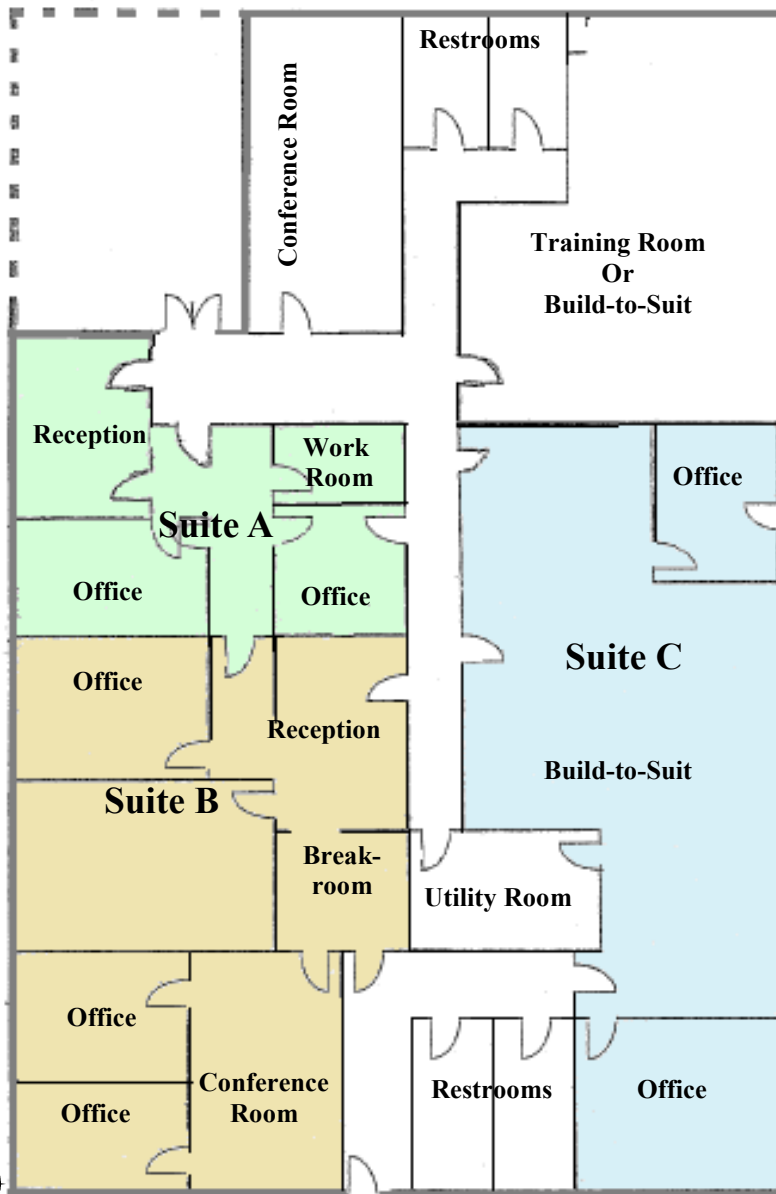
Suites A-C * ♦ 4,224 ± sf ♦ \$7.00/sf FSEJ

2312 N Cole

♦ Year Built: 1977 ♦ Zoned: R-3D ♦ Remodel in process

Multiple Tenants, Private Offices, Conference Rooms, Reception, & additional room for cubicles

♦ Skylights ♦ Medical Billing Office/Collections Site ♦ Locked Offices



Atrium

N * This floor plan representation is not to scale. Actual office space may differ.

www.commercialnw.com ~ nancy@commercialnw.com ~ 208.344.0288



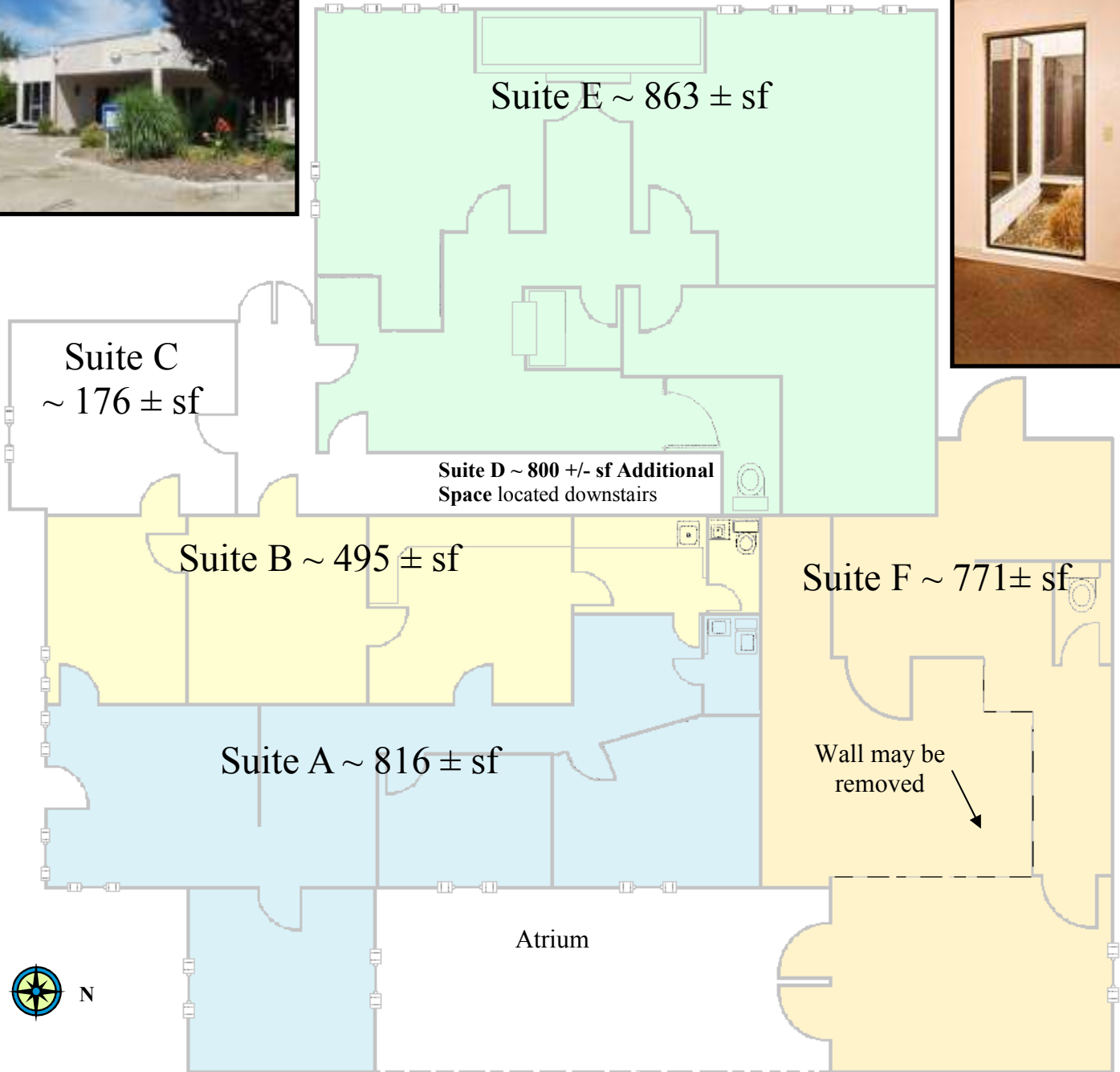
THE INFORMATION CONTAINED HEREIN HAS BEEN OBTAINED BY RELIABLE SOURCES, BUT IS NOT GUARANTEED.
COMMERCIAL NORTHWEST TEAM-A KW COMMERCIAL AFFILIATE



Office Space For Lease

2316 N Cole Road, Boise ID

Call for leasing rates



* This floor plan representation is not to scale. Actual office space may differ.

www.commercialnw.com ~ nancy@commercialnw.com ~ 208.344.0288



THE INFORMATION CONTAINED HEREIN HAS BEEN OBTAINED BY RELIABLE SOURCES, BUT IS NOT GUARANTEED.
COMMERCIAL NORTHWEST TEAM-A KW COMMERCIAL AFFILIATE



Office Space For Lease

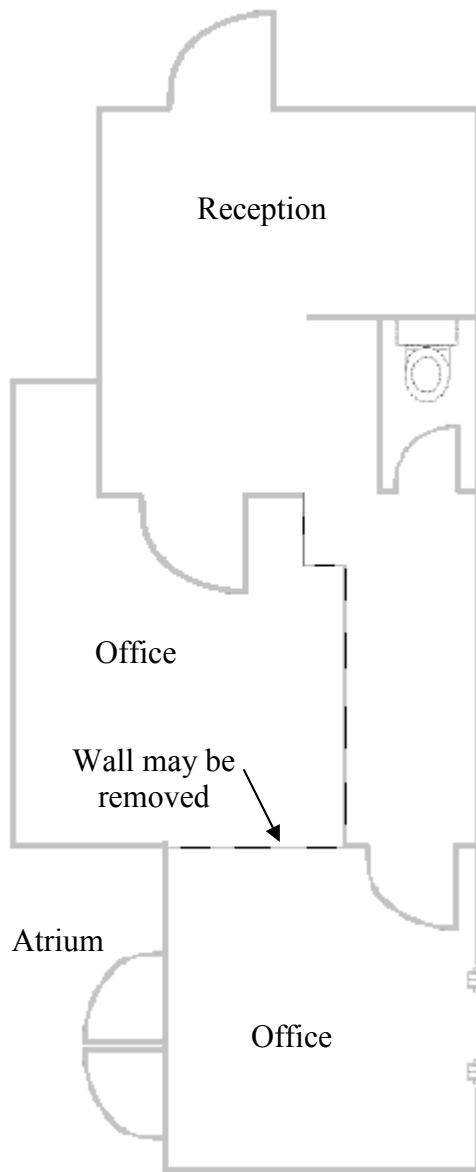
2316 N Cole Road, Boise ID

Suite F * ♦ 771 ± sf ♦ \$675/mo FSEJ

2316 N Cole

♦ Year Built: 1977 ♦ Zoned: R-1C

Two offices (which may be combined), reception area, and patio.
Currently being remodeled with new paint, carpet, and other upgrades.



* This floor plan representation is not to scale. Actual office space may differ.

www.commercialnw.com ~ nancy@commercialnw.com ~ 208.344.0288



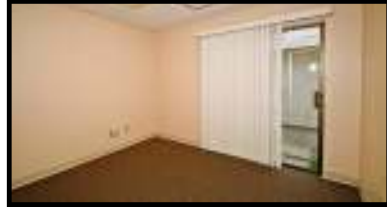
THE INFORMATION CONTAINED HEREIN HAS BEEN OBTAINED BY RELIABLE SOURCES, BUT IS NOT GUARANTEED.
COMMERCIAL NORTHWEST TEAM-A KW COMMERCIAL AFFILIATE



Office Space For Lease

2316 N Cole Road, Boise ID

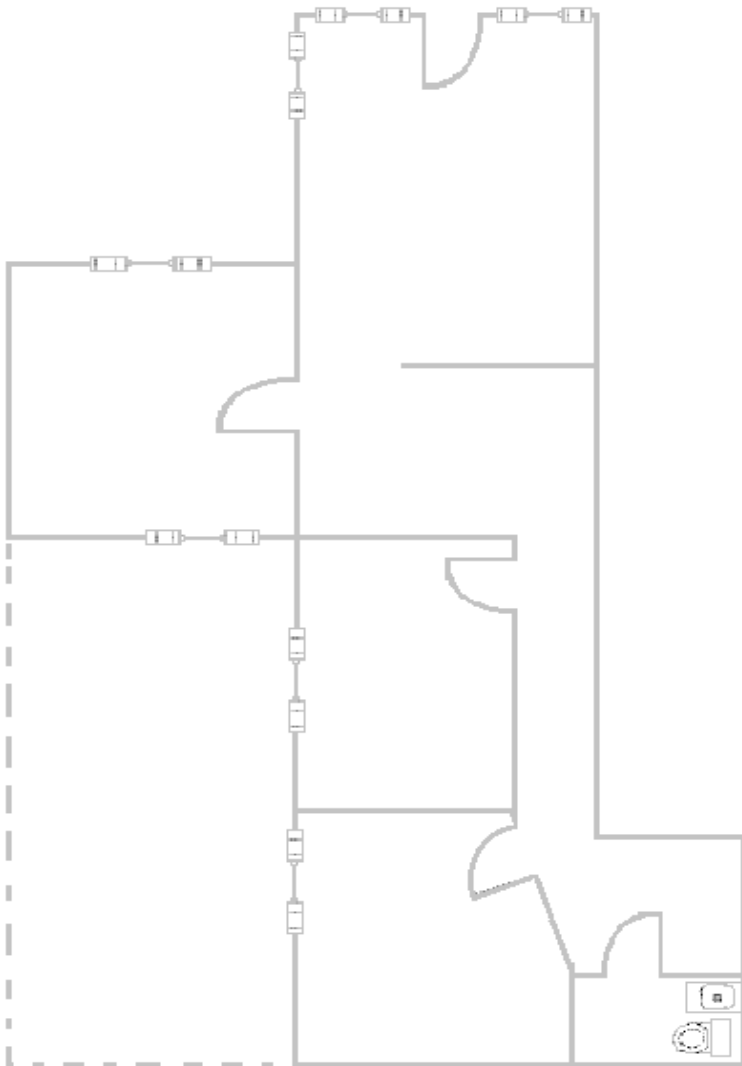
Lease Individual Spaces (Priced below) ♦ Lease Suites A-C, 1,486 ± sf (\$8.50/sf FSEJ)*



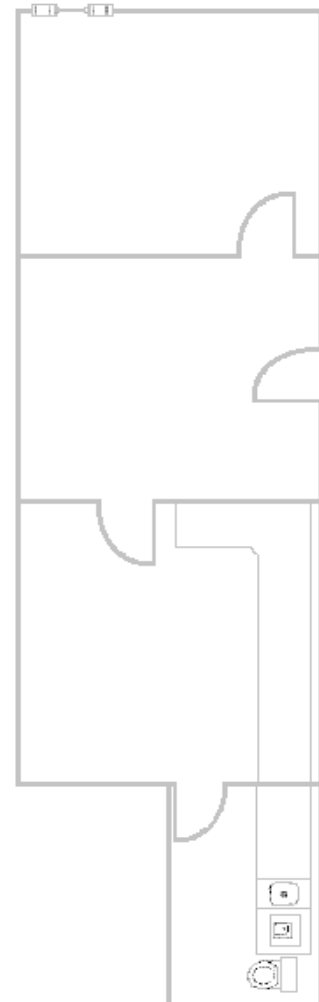
Suite C ~ 176 ± sf
Available \$175/mo FSEJ



Suite A ~ 816 ± sf
Available for \$695/mo FSEJ



Suite B ~ 495 ± sf
Available \$435/mo FSEJ

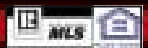


N * This floor plan representation is not to scale. Actual office space may differ.

www.commercialnw.com ~ nancy@commercialnw.com ~ 208.344.0288



THE INFORMATION CONTAINED HEREIN HAS BEEN OBTAINED BY RELIABLE SOURCES, BUT IS NOT GUARANTEED.
COMMERCIAL NORTHWEST TEAM-A KW COMMERCIAL AFFILIATE



Office Space For Lease

2316 N Cole Road, Boise ID

Suite E * ♦ 863 ± sf ♦ \$735/mo FSEJ

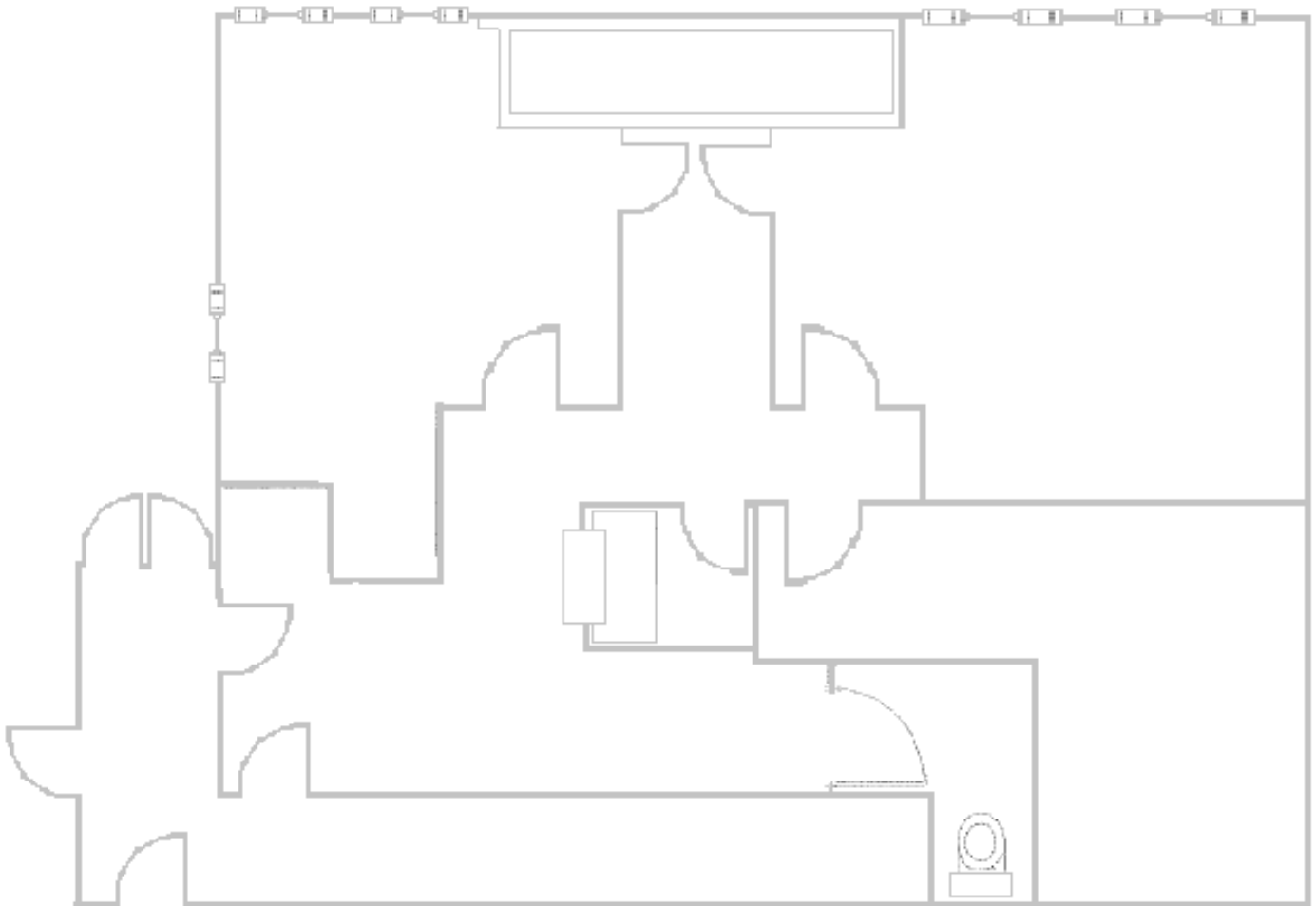


2316 N Cole

♦ Year Built: 1977

♦ Zoned: R-1C

Remodeled office space with 3 offices and
reception desk.



N

* This floor plan representation is not to scale, Actual office space may differ.

www.commercialnw.com ~ nancy@commercialnw.com ~ 208.344.0288



THE INFORMATION CONTAINED HEREIN HAS BEEN OBTAINED BY RELIABLE SOURCES, BUT IS NOT GUARANTEED.
COMMERCIAL NORTHWEST TEAM-A KW COMMERCIAL AFFILIATE

